
TECHNICAL BULLETIN



INSTALLATION INSTRUCTIONS FOR
INSTALLATION KIT
ELECTRONIC EQUIPMENT MK-2694/VRC
(NSN 5895-01-347-6187) (EIC: N/A)
TO PERMIT INSTALLATION OF RADIO SETS
ANNRC-87/88/90 SERIES
IN A
M1074/75 PALLETIZED LOAD SYSTEM (PLS)
Approved for public release; distribution is unlimited.

HEADQUARTERS, DEPARTMENT OF THE ARMY

1 SEPTEMBER 1993

TECHNICAL BULLETIN
DEPARTMENT OF THE ARMY
NO.11-5820-890-20-84

HEADQUARTERS,

WASHINGTON, D. C., 1 SEPTEMBER 1993

INSTALLATION INSTRUCTIONS FOR INSTALLATION KIT
ELECTRONIC EQUIPMENT MK-2694NRC
(NSN 5895-01-347-6187) (EIC: N/A)
TO PERMIT INSTALLATION OF
RADIO SETS ANNRC-87/88/90 SERIES
IN A
M1074/75 PALLETIZED LOAD SYSTEM (PLS)

REPORTING OF ERRORS AND RECOMMENDING IMPROVEMENTS

You can help improve this manual. If you find any mistakes or if you know of a way to improve the procedures, please let us know. Mail your letter, DA Form 2028 (Recommended Changes to Publications and Blank Forms), or DA Form 2028-2 located in the back of this manual direct to: Commander, US Army Communications- Electronics Command and Fort Monmouth, ATTN: AMSEL-LC-LM-LT, Fort Monmouth, New Jersey 07703-5007. In either case a reply will be furnished direct to you.

TABLE OF CONTENTS

Subject	Section	Page
Scope	0.1	1
General Information.....	0.2	1
Maintenance Forms, Records, and Reports	0.3	1
Reports of Maintenance and Unsatisfactory Equipment	0.3.1	1
Report of Packing and Handling Deficiencies	0.3.2	1
Discrepancy in Transportation Deficiency Report (TDR) (SF 361)	0.3.3	1
Consolidated Index of Army Publications.....	0.4	1
Purpose of Installation.....	1	2
End Item or System to be Modified	2	2
Application Times	3	2
Time for Completion of Installation.....	3.1	2
Time for Installation of One Assembly or Component.....	3.2	2
Preparation for Installation.....	4	2
Preparation of Vehicle	4.1	2
Preparation of MK.....	4.2	2
MK, Distribution, and Consumables	4.3	3
Tools and Test, Measurement, and Diagnostic Equipment (TMDE) Required	4.4	8
Installation Procedures	5	9
Installation of Antenna AS-3900NRC (antenna).....	5.1	11
Installation of Antenna Mounting Bracket.....	5.1.1	11
Installation of Antenna Base.....	5.1.2	12
Installation of Top Antenna Assembly.....	5.1.3	13
Installation of Mounting Base, Electrical Equipment MT-6352NRC (mounting base)	5.2	14
Installation of Loudspeaker, Permanent Magnet LS-454/U (speaker)	5.3	17
Installation of Handset Holder for Handset H-250/U	5.4	18
Installation of Cables	5.5	19
Installation of MK-2499NRC.....	5.6	21
Post-Installation and Checkout.....	5.7	21
Appendix A References.....	A-1	

LIST OF ILLUSTRATIONS

Figure	Title	Page
4-1(1)	MK Illustrated Parts List	5
4-1(2)	MK Illustrated Parts List	6
4-2	TSEC/KY-57 Illustrated Parts List	7
5-1(1)	MK and Radio Installation: MK Equipment Locations	9
5-1(2)	MK and Radio Installation: Radio Equipment Locations	10
5-2(1)	Antenna Mounting Bracket Installation.....	11
5-2(2)	Antenna Base Installation.....	12
5-2(3)	Top Antenna Assembly Installation.....	13
5-3(1)	Mounting Base Installation	14
5-3(2)	Mounting Base Installation	16
5-4	Installation of Loudspeaker LS-454/U	17
5-5	Installation of Handset Holder for Handset H-250/U	18
5-6	Installation of Cables.....	20
5-7(1)	Cable Diagram: For AN/VRC-87A/88A/90A.....	22
5-7(2)	Cable Diagram: For ANNRC-87/88/90.....	23

LIST OF TABLES

Table	Title	Page
4-1	Parts List for Installation of Radio Set AN/VRC-87/88/90 Series.....	4
4-2	Additional Items Required for Installation when using RT-1439NRC	7

0.1 SCOPE

This technical bulletin provides installation instructions for Installation Kit, Electronic Equipment MK-2694NRC, commonly referred to as the Mounting Kit (MK). The MK shall be installed into the following type of vehicle(s):

- * M1074/75 Palletized Load System (PLS)

The MK is used for installation of radio set components at field locations. The information contained in this technical bulletin is the official authorization to perform the installation at the unit maintenance level.

NOTES

- . This technical bulletin is not an authorization for requisition or turn-in of vehicles.
- . This technical bulletin does not establish quantity or types of vehicles assigned to using units.

This technical bulletin does not contain information on the maintenance or replacement of the MKs. This information is contained in the MAC of TM 11-5820-890-20-2, TM 11-5820-890-20-4 and RPSTL of TM 11-5820-890-20P.

0.2 GENERAL INFORMATION.

The MK becomes operable when all the radio set components are installed in the vehicle and correct power is supplied. Refer to TM 11-5820-890-20-1 or TM 11-5820-890-20-4 for installation, Operational (OP) Check instructions, and required maintenance procedures. Refer to TM 11-5820-890-20P for repair parts.

Included in the radio set AN/VRC-87/88/90 Series are:

- . Radio Set ANNRC-87/88/90 (for RT-1439NRC)
- . Radio Set ANNRC-87A/88A190A (for RT-1523(C)/U)

0.3 MAINTENANCE FORMS, RECORDS, AND REPORTS.

0.3.1 Reports of Maintenance and Unsatisfactory Equipment. See Section 4.2.2.3 for information.

0.3.2 Report of Packing and Handling Deficiencies. See Section 4.2.2.1 for information.

0.3.3 Discrepancy In Transportation Deficiency Report (TDR) (SF361). See Section 4.2.2.2 for information.

0.4 CONSOLIDATED INDEX OF ARMY PUBLICATIONS.

Refer to the latest issue of DA Pam 25-30 to determine whether there are new changes, or additional publications pertaining to the equipment.

1. PURPOSE OF INSTALLATION.

The Electronic Equipment MK-2694NRC (MK) contains the items needed to mount Radio Set ANNRC-87A/88A/90A in a M1074/75 Palletized Load System (PLS) (vehicle). If Radio Set ANNRC-87/88/90 is to be installed, communications security equipment (TSEC/KY-57) will need to be installed also; see Section 5.6 for information.

2. END ITEM OR SYSTEM TO BE MODIFIED.

Not applicable.

3. APPLICATION TIMES.

3.1 Time for Completion of Installation. Using two people, a total of 4.5 work hours is required. Typical vehicle downtime is 4.5 hours.

3.2 Time for Installation of One Assembly or Component. The following table lists the time required to install one component. All times have been rounded off to the nearest half hour. The sum of these items will not reflect the typical vehicle downtime.

ITEM	SECTION	TIME
Antenna AS-3900NRC	*5.1	1.0
Mounting Base, Electrical Equipment MT-6352/VRC	*5.3	0.5
Cables	*5.5	1.0

4. PREPARATION FOR INSTALLATION.

This section explains how to prepare the vehicle and MK for installation.

4.1 Preparation of Vehicle. To prepare the vehicle for installation, insure that the site includes adequate lighting and a power source when drilling is required. Inspect the vehicle for damage that could affect installation. Have any such damage repaired before installing MK.

4.1.1 Items to be Removed. Remove existing ANNRC-12 radio family installation kit/harness. See TM 11-5820-401-20-2 for removing items used with intercom systems, or TM 11-5820-401-20-1 (used without intercom systems), and TM 9-2320-289-20.

4.1.2 Items to be Retained. Not applicable.

4.2 Preparation of MK. To prepare MK, unpack, inspect and check inventory.

4.2.1 Precautions During Handling. Observe these steps to prevent equipment damage.

- a. Keep dust cover in place on connectors.
- b. Do not disassemble or modify parts in MK unless authorized to do so.
- c. Keep mounting hardware covered and protected until needed.
- d. When exposed to moisture, rain or salt water, keep all parts dry to prevent corrosion.

4.2.2 Unpack and Inspect Equipment.

4.2.2.1 Inspect Packaging for Evidence of Damage. Any shipping damage should be reported on SF364 Report of Discrepancy (ROD) as prescribed in AR 735-11-2/DLAR 4140.55/NAVMATINST 4355.73A/AFR 400-64/MCO 4430.3F.

4.2.2.2 Unpack and Inventory MK. If any item is missing, fill out and forward Transportation Deficiency Report (TDR) (SF361) as described in AR 55-38/NAVSUPINST 4610.33C/AFR 75-18/MCO P4610.19D/DLAR 4500.15.

4.2.2.3 Examine Each Item for Damage. If any item is damaged, fill out and forward SF364 Report of Discrepancy (ROD) as prescribed in AR 735-11-2/DLAR 4140.55/NAVMATINST 4355.73A/AFR-400-64/MCO 4430.3F. All damages should be reported as prescribed in DA Pam 738-750, as contained in Maintenance Management Update.

4.3 MK, Distribution and Consumable.

4.3.1 Items Supplied In MK and or Required for Installation. Use Table 4-1 and Figure 4-1 to identify and inventory MK parts.

4.3.2 Distribution and Issue Instructions.

- a. US Forces: Do not requisition MK. They will be shipped automatically.
- b. US Army Depots: Requisition MK through supply channels.
- c. Multiservice: Instructions shall be included for multiservice modifications.
- d. MAP/MAS Countries: Instructions shall be provided for MAP/MAS countries.

Table 4-1. Parts List for Installation of Radio Set ANNRC-87/88/90 Series

NSN	ITEM DESCRIPTION AND PART NUMBER	QUANTITY IN MK	SMR CODE	FIGURE ITEM NO.
5985-01-297-2971	Antenna, Vehicular AS-3900NRC (A3017899-1)	1	PAOOF A	4-1, 2
5305-00-847-1159	Screw, Cap, Hexagon (3/8-16 x 1 3/4 in) MS35307-365	4	PAOZZA	
5310-00-913-8881	Nut, Hexagon (3/8-16 in) MS51971-3	4	PAOZZA	
5310-00-061-1258	Washer, Lock, Internal/External Toothed (3/8 in) MS45904-76	8	PAOZZA	
5310-00-889-2527	Washer, Lock, Internal/External Toothed (5/16 in) MS45904-72 (Not Used)	2	PAOZZA	
5306-00-225-9086	Bolt, Machine (5/16-24 x 5/8 in) MS90726-31 (Not Used)	1	PAOZZA	
5330-01-205-2864	Gasket (A3013655-1)	1	PAOZZA	
5975-01-188-8873	Mounting Base, Electrical Equipment MT-6352/VRC (A3013367-1)	1	PAOOF A	4-1, 1
5306-00-225-9089	Bolt, Machine (5/16-24 x 1 in) MS90726-34	5	PAOZZA	
5310-00-889-2527	Washer Lock, Internal/External Toothed (5/16 in) MS45904-72	10	PAOZZA	
5310-00-880-7746	Nut, Hexagon (5/16-24) MS51968-5	5	PAOZZA	
5995-01-363-1189	Cable Assembly, Power, Electrical CX-13450NRC (5 FT, 0 IN) (A3191153-1)	1	PAOZZA	4-1, 9
5995-01-219-7035	Cable Assembly, Radio Frequency, CG-3855NRC (18 FT, 0 IN) (A3014031-8)	1	PAOZZA	4-1, 8
4020-01-341-8795	Fiber Rope Assembly, Single Leg (A3167672-1)	1	PAOZZA	4-1, 4
5965-00-876-2375	Loudspeaker, Permanent Magnet LS-454/U	1	PAOZZA	4-1, 5
5965-00-043-3463	Handset, H-250/U	1	PAOZZA	4-1, 3
	Bracket, Mounting (A3050655-1)	1	XBOZZA	4-1, 6
	Holder, Handset (A3046323)	1	XBOZZA	4-1, 7
5325-00-171-9688	Grommet, Nonmetallic, MS35489-44	1	PAOZZA	
5325-00-074-3301	Grommet, Nonmetallic, Plastic Edging MS21266-2N	1	PAOZZA	
5340-00-809-1490	Clamp, Loop (1/4-1/4) MS21333-98	2	PAOZZA	
5310-00-903-5966	Nut, Plain, Hexagon (1/4-20) MS51971-1	2	PAOZZA	
5975-00-111-3208	Strap, Tiedown, Electrical Components MS3367-5-9	10	PAOZZA	
5305-00-068-0502	Screw, Cap, Hexagon (1/4-20 x 3/4) MS90725-6	2	PAOZZA	
5305-00-146-2524	Screw, Tapping, Thread Forming (1/4-14 x 3/4) MS51850-86	2	PAOZZA	
5310-00-582-5677	Washer, Flat (1/4 in) MS15795-810	2	PAOZZA	
5310-00-582-5965	Washer, Lock (1/4 in) MS35338-44	4	PAOZZA	
5310-00-889-2528	Washer, Lock, Internal External Toothed (1/4 in) MS45904-68	1	PAOZZA	

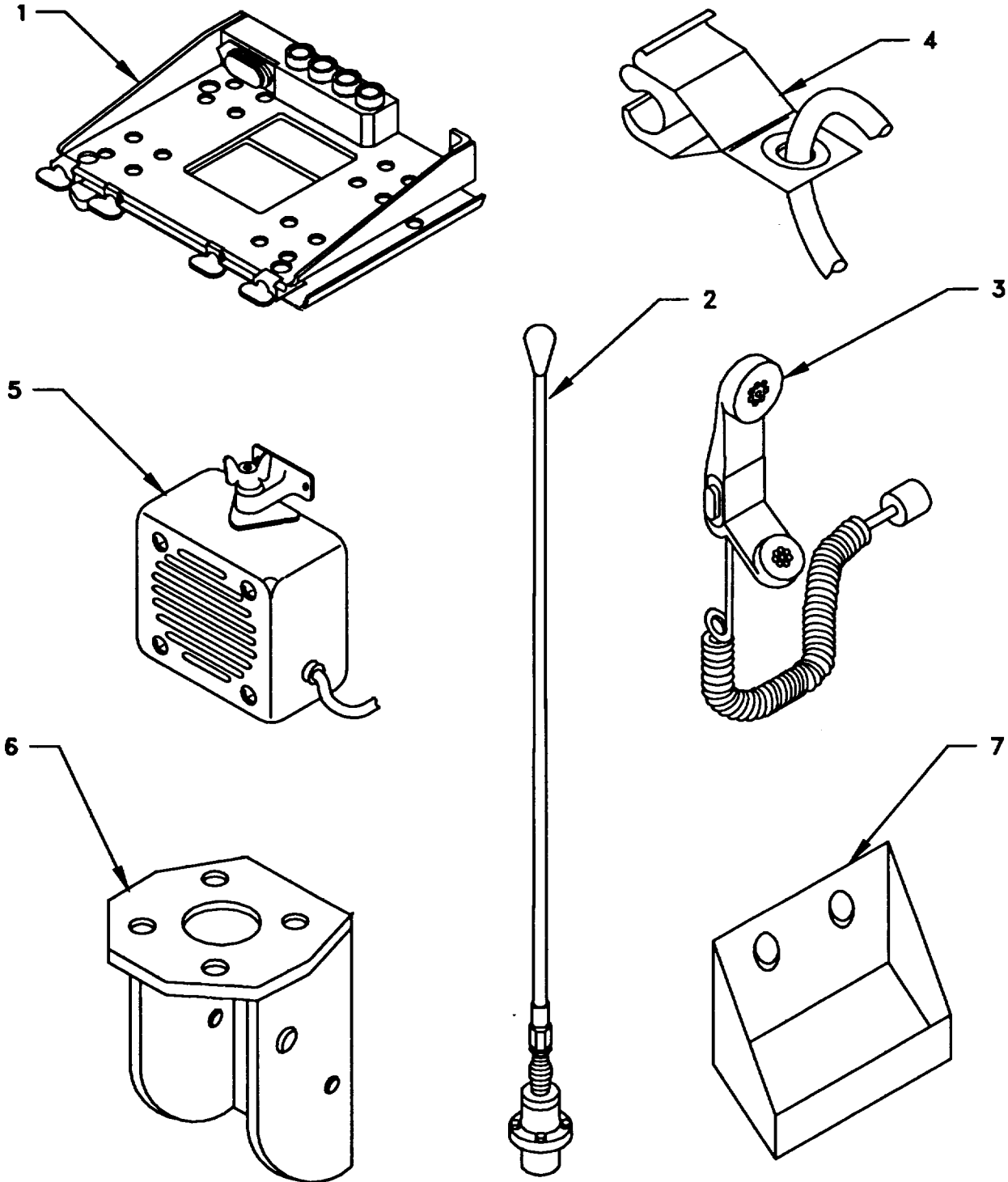


Figure 4-1(1). MK Illustrated Parts List

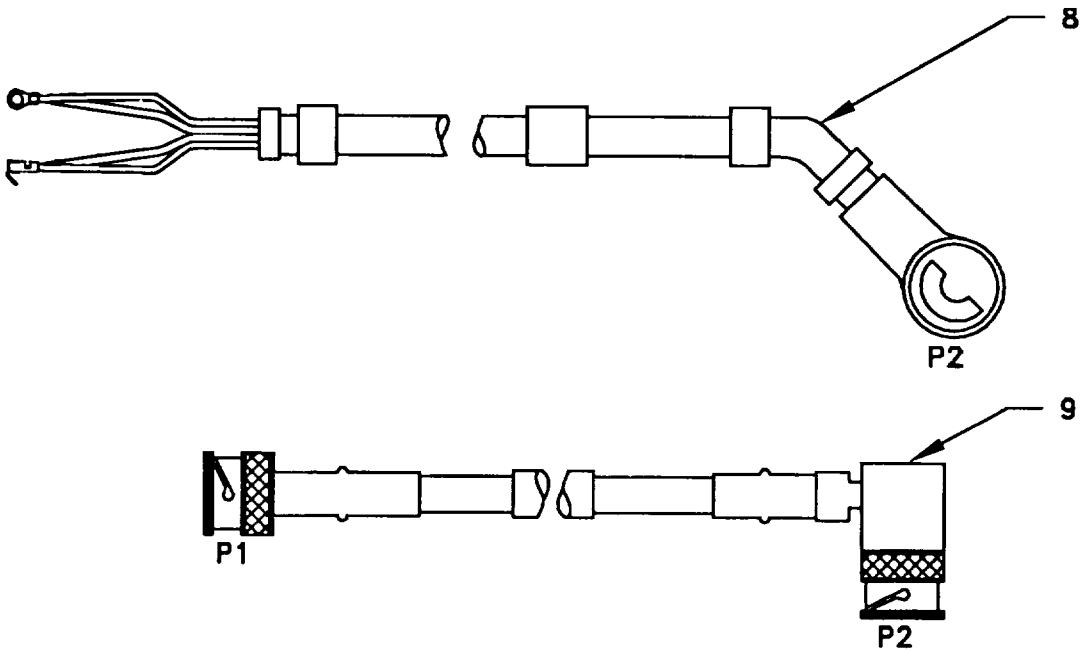


Figure 4-1(2). MK Illustrated Parts List

Table 4-2. Additional Items Required for Installation when using RT-1439NRC

NSN	ITEM DESCRIPTION AND PART NUMBER	QUANTITY IN MK	SMR CODE	FIGURE ITEM NO.
5995-01-222-4210	Plate, Mounting (A3050676-1)	1	XBOZZA	4-2, 1
5995-01-226-5482	Cable Assembly, Special Purpose, Electrical CX-13293NRC (4 FT, 0 IN) (A3014034-1)	1	PAOZZA	4-2, 2
5995-01-226-5482	Cable Assembly, Power, Electrical CX-13303NRC (2 FT, 6 IN) (A3014040-5)	1	PAOZZA	4-2, 3
5305-00-984-7350 MS35191-308	Screw, Machine, Flat-Head (5/16-24 x 1 in)	4	PAOZZA	

Figure 4-2. TSEC/KY-57 Illustrated Parts List

7

4.3.3 Consumable Materials. The table below lists materials required for installation but not supplied with MK.

NSN	NOMENCLATURE
8040-00-117-8510	Adhesive-Sealant, Clear, RTV
6850-00-880-7616	Silicone Compound, MIL-S-8660

4.4 Tools and Test, Measurement, and Diagnostic Equipment (TMDE) Required. The following tools and TMDE are needed for installation.

NOMENCLATURE	NSN	QUANTITY
Radio Set* 1		
Pocket Knife, Electrician's	5110-00-240-5943	1
Screwdriver, No2 Point Phillips, 4 in	5120-00-234-8913	1
Screwdriver, 1/4 in Flatblade, 4 in	5120-00-222-8852	1
Pliers, Round Nose	5120-00-240-6172	1
Pliers, Diagonal Cutting	5110-00-965-0974	1
Wrench, Open/Box: 7/16 in	5120-00-228-9505	1
1/2 in	5120-00-228-9506	1
9/16 in	5120-00-228-9507	1
Extension Socket: 3 in	5120-00-243-1689	1
6 in	5120-00-227-8107	1
Handle, Socket Wrench:	5120-00-240-5364	1
Socket: 7/16 in	5120-00-227-6703	1
1/2 in	5120-00-237-0977	1
9/16 in	5120-00-227-6704	1
Electric Drill	5120-00-889-8994	1
Drill Bit: 3/16 in	5133-00-227-9654	1
9/32 in	5133-00-189-9264	1

*Use radio issued with your vehicle if available.

5. INSTALLATION PROCEDURES.

This section describes where and how to install MK items in the vehicle. See Figure 5-1 for an overall view of where the MK equipment, as well as radio components, will be installed. When installing MK equipment, be sure to read and follow instructions and illustrations carefully.

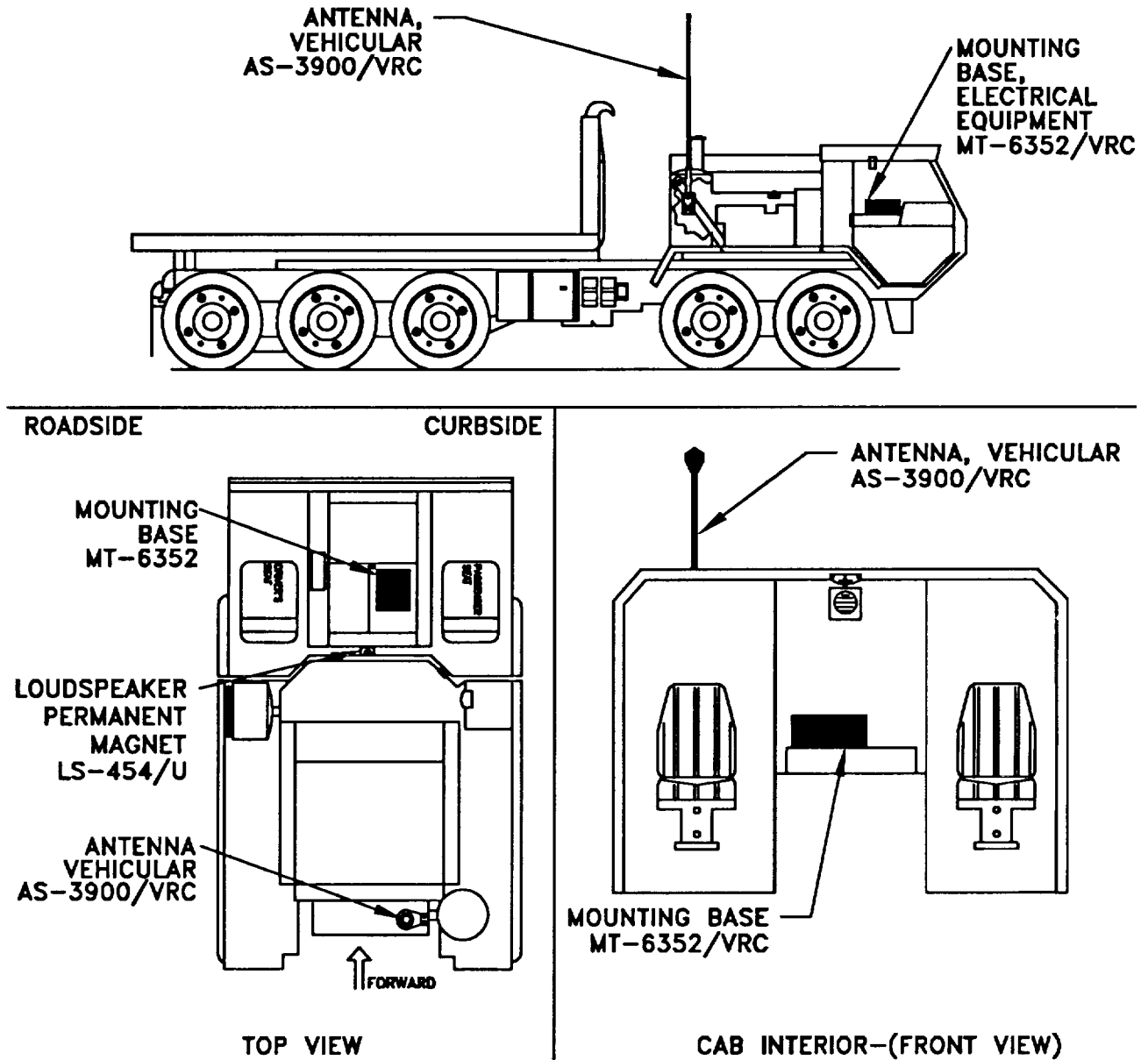


Figure 5-1(1). MK and Radio Installation: MK Equipment Locations

5. INSTALLATION PROCEDURES. Continued.

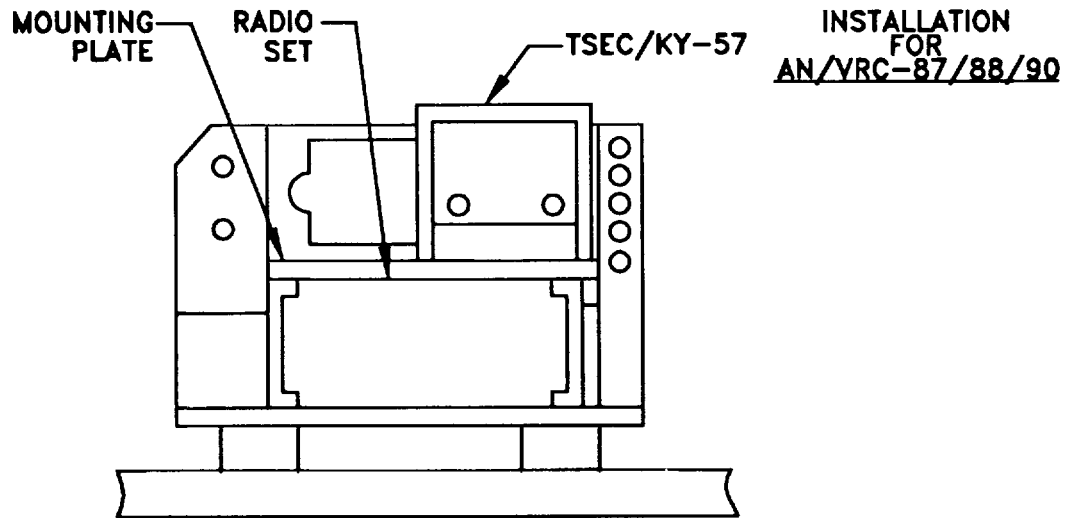
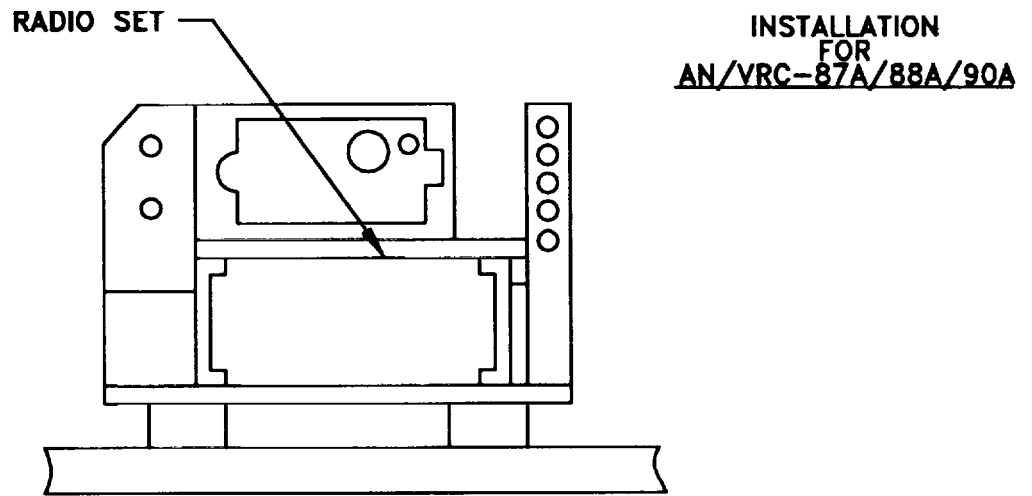


Figure 5-1(2). MK and Radio Installation: Radio Equipment

5.1 Installation of Antenna, Vehicular AS-3900NRC (antenna).

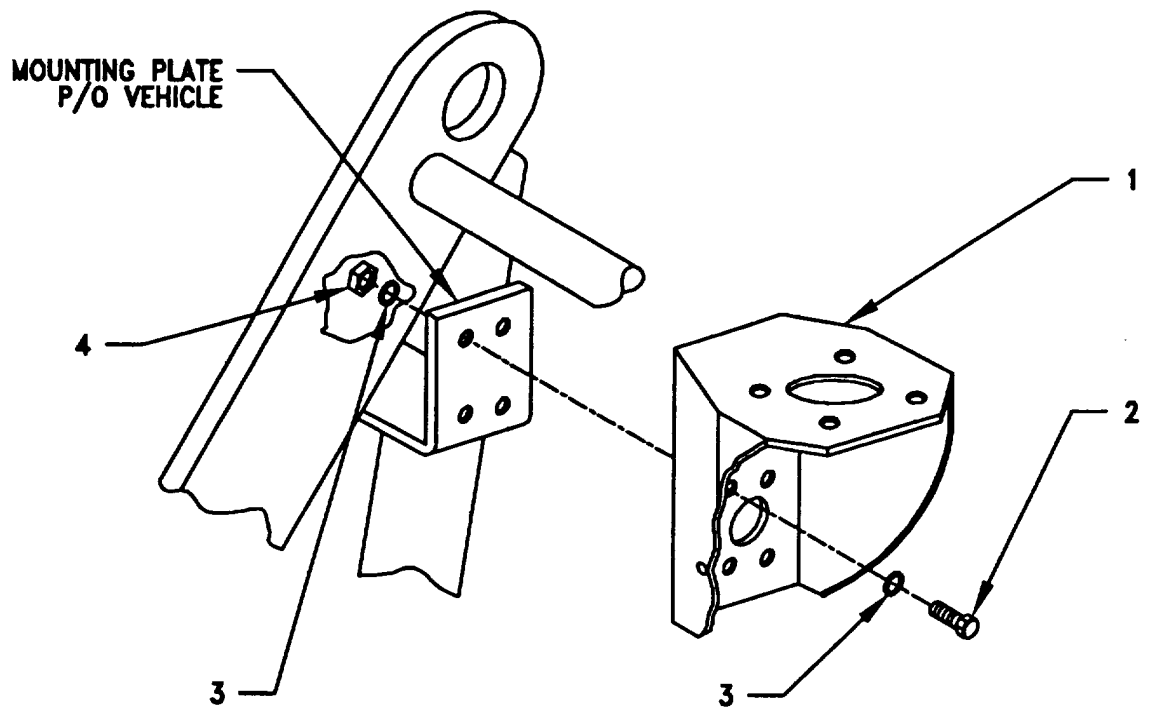
5.1.1 Installation of Antenna Mounting Bracket. Use the following procedures to install mounting bracket. See Figure 5-1 (1) for location.

ITEM	ACTION	REMARKS
------	--------	---------

NOTE

Apply a thin coat of adhesive-sealant to both sides of each internal external toothed (IET) washer during Installation, and to the area of contact where IET washer is to be placed.

<p>a. Bracket, mounting (1), three existing screws (2), six existing IET washers (3) and three existing nuts (4).</p>	<p>Locate existing mounting plate on stack brace rear curbside of vehicle. Fasten mounting bracket to mounting plate as shown in Figure 5-2(1). Leave the left screw off at this time. It will be used later to mount the ground strap.</p>	<p>Tools: 7/16 in socket and 7/16 in open/box wrench.</p>
---	---	---



- 1. BRACKET, MOUNTING
- 2. EXISTING SCREWS
- 3. EXISTING IET WASHERS
- 4. EXISTING NUTS

Figure 5-2(1). Antenna Mounting Bracket Installation

5.1.2 Installation of Antenna Base. Use this procedure to install the antenna base at location shown in Figure 5-1(1).

ITEM	ACTION	REMARKS
a. Gasket (5).	Place on mounting bracket (4) and aline mounting holes. See Figure 5-2(2).	Tools: 9/16 in socket, 3 in socket extension, 6 in socket extension and 9/16 in open/box wrench.
b. Antenna base (1).		
c. Four cap screws (2), eight IET washers (3) and four nuts (6).	Install and secure.	Tools: 7/16 in socket and 7/16 in openrbox wrench.
d. Ground strap (10), existing screw (9), two existing IET washers (7), one IET washer (8) and existing nut (11).	Install to mounting bracket (4) and secure.	

- 1. ANTENNA BASE
- 2. CAP SCREW (3/8-16 X 1 3/4 IN)
- 3. IET WASHER (3/8 IN)
- 4. MOUNTING BRACKET
- 5. GASKET
- 6. NUT (3/8-16)
- 7. EXISTING IET WASHER
- 8. IET WASHER (1/4 IN)
- 9. EXISTING SCREW
- 10. GROUND STRAP
- 11. EXISTING NUT

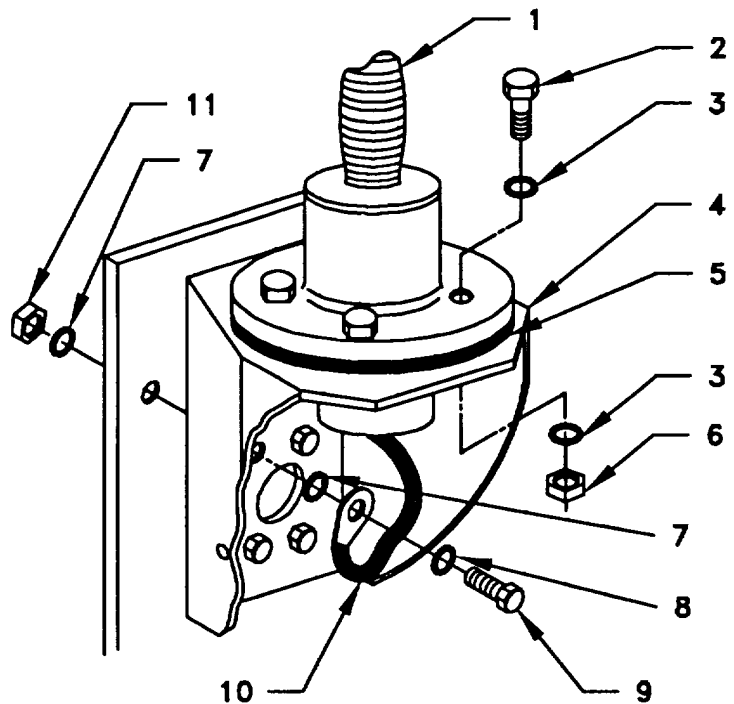


Figure 5-2(2). Antenna Base Installation

5.1.3 Installation of Top Antenna Assembly. The top antenna assembly includes two antenna elements. Use the following procedures to assemble, install and tie down all antennas.

ITEM	ACTION	REMARKS
1.	ANTENNA ELEMENT (UPPER)	
2.	ANTENNA ELEMENT (LOWER)	
3.	ANTENNA BASE	
4.	LOCK WIRE	
5.	TIEDOWN KIT	

Figure 5-2(3). Top Antenna Assembly Installation

5.2 Installation of Mounting Base, Electrical Equipment MT-6352NRC (mounting base).

ITEM	ACTION	REMARKS
------	--------	---------

NOTE

Apply a thin coat of adhesive-sealant to both sides of each internal external toothed (IET) washer before it is installed, and to the area of contact where IET washer is to be placed.

- | | | |
|-------------------------------------|---|------------------------------------|
| a. Mounting plates. | In the cab, locate the plates between the driver's seat and the passenger seat. See Figure 5-1(1) for location. Unfasten and remove plates (2) and (3) by removing the existing screws (1). Retain the screws. See Figure 5-3(1). | Tools: No. 2 Phillips screwdriver. |
| b. Power cable (4) and grommet (5). | Locate the existing plugged hole underneath the plates. Remove and discard plug and install grommet (5). Route power cable (4) through grommet and attach to ground lug and fifth terminal from back. | |

- 1. EXISTING SCREWS
- 2. LETTERED PLATE
- 3. MOUNT PLATE
- 4. POWER CABLE
- 5. GROMMET

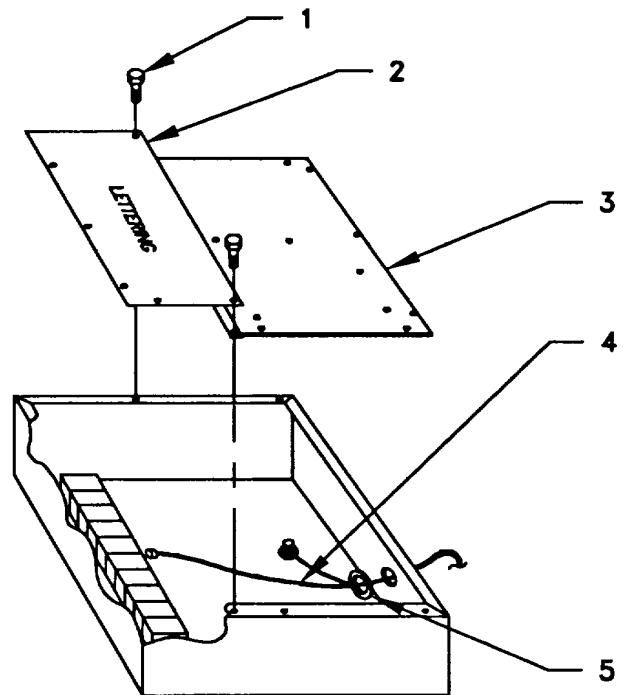
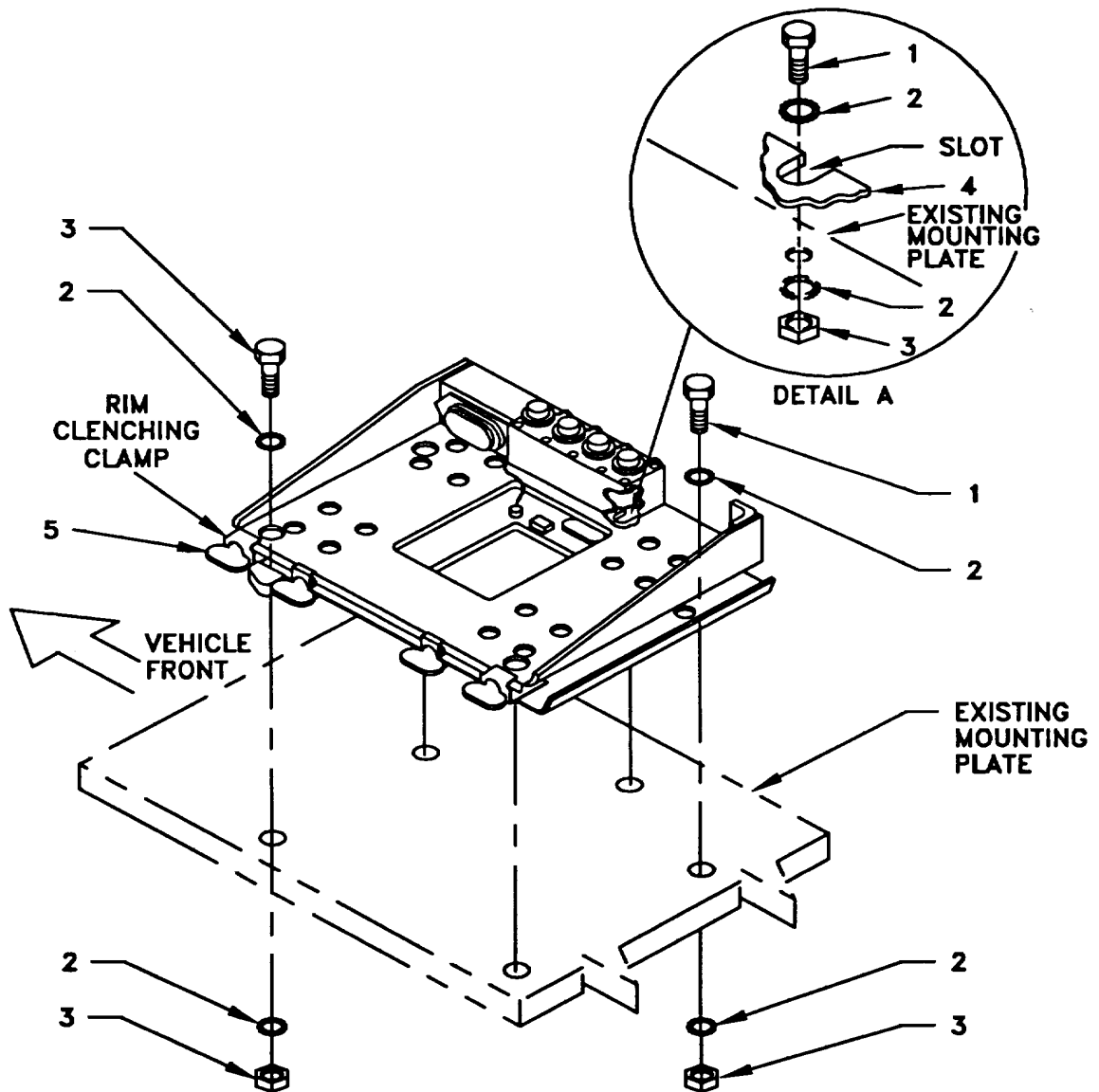


Figure 5-3(1). Mounting Base Installation

5.2 Installation of Mounting Base, Electrical Equipment MT-6352NRC (mounting base). Continued. Remove and retain attaching bag of 5/16 mounting hardware for installation. To insure good electrical grounding, any rust, corrosion or paint around mounting holes in mounting plate should be removed before installing the mounting base.

ITEM	ACTION	REMARKS
c. Mounting base (4).	Remove the five plugs from the existing mounting plate and place mounting base (4) on existing mounting plate over existing holes. See Figure 5-3(2).	
d. Two outer thumbscrews (5).	Turn ccw until both sets of threads have cleared center of holes.	
e. Mounting base (4).	Aline four holes and rear slot with matching hole pattern in existing mounting plate.	
f. Five machine bolts (1), ten IET washers (2) and five nuts (3).	Install and tighten to mounting base (4) and existing mounting plate.	Tools: 1/2 in socket and 1/2 in open/box wrench.
g. Two outer thumbscrews (5).	Tighten and secure.	
h. Mounting plates.	Reinstall lettered plate with screws retained in step a. Set mounting plate with mounting base back in position. Do not secure mounting plate.	Tools: No. 2 Phillips screwdriver.

5.2 Installation of Mounting Base, Electrical Equipment MT-6352NRC (mounting base). Continued.

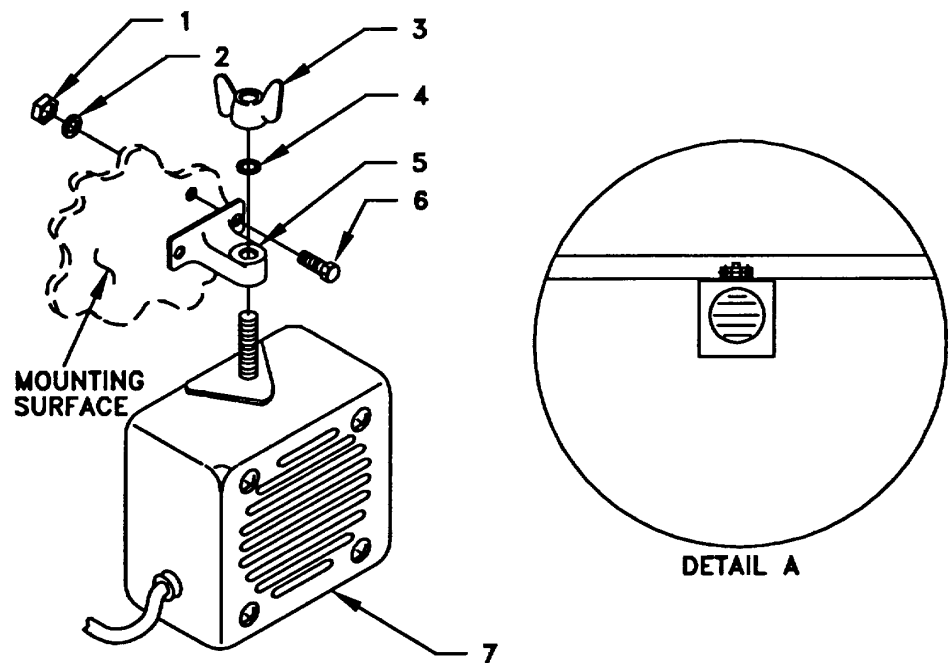


- 1. MACHINE BOLT (5/16-24 X 3/4 IN)
- 2. IET WASHER (5/16 IN)
- 3. NUT (5/16-25 IN)
- 4. MOUNTING BASE
- 5. THUMBSCREW

Figure 5-3(2). Mounting Base Installation

5.3 Installation of Loudspeaker, Permanent Magnet LS-454/U (speaker). Mount the speaker LS-454/U to the rear wall (Figure 5-1(1)). Refer to Figure 5-4, Detail A for location of mounting holes.

ITEM	ACTION	REMARKS
a. Bracket (5).	Remove existing indicated hardware from mounting surface. See Figure 5-4, Detail A.	Tools: 7/16 in socket and 7/16 in open/box wrench.
b. Two nuts (1), two lock washers (2) and two screws (6).	Secure speaker bracket (5) to the ceiling. See Figure 5-4, Detail A.	
c. Speaker (7).	Insert stud on speaker (7) through bracket (5). Secure with wing nut (3) and lock washer (4).	

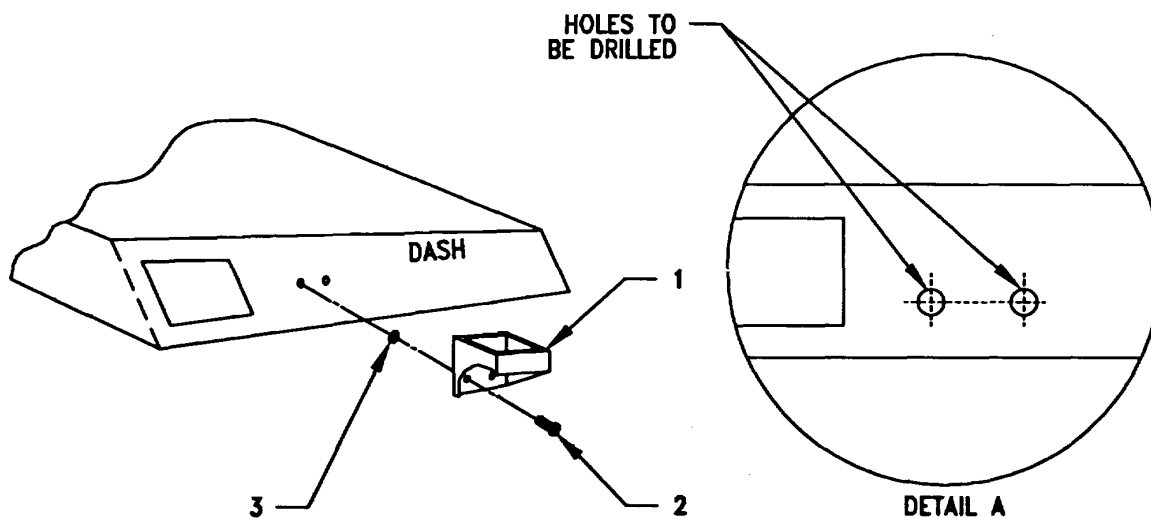


- 1. EXISTING NUT
- 2. EXISTING LOCK WASHER
- 3. WING NUT (P/O 7)
- 4. LOCK WASHER (P/O 7)
- 5. SPEAKER BRACKET (P/O 7)
- 6. EXISTING CAP SCREW
- 7. LS-454/U LOUDSPEAKER

Figure 5-4. Installation of Loudspeaker, LS-454/U

5.4 Installation of Handset Holder for Handset H-250/U. For mounting location for handset holder refer to Figure 5-5. See Figure 5-5, Detail A for location of mounting holes.

ITEM	ACTION	REMARKS
a. Handset holder (1).	Use handset holder as a template. Drill two 3/16 in diameter holes. See Figure 5-5, Detail A.	Tools: Drill, 3/16 in drill bit.
b. Two screws, self-tapping (2) and two lock washers (3).	Secure handset holder (1) to the dashboard.	Tools: No.2 Phillips screwdriver and 7/16 in open/box wrench.



- 1. HOLDER, HANDSET
- 2. SCREW, SELF-TAPPING (1/4-14 X 3/4)
- 3. LOCK WASHER (1/4 IN)

Figure 5-5. Installation of Handset Holder for H-25./U

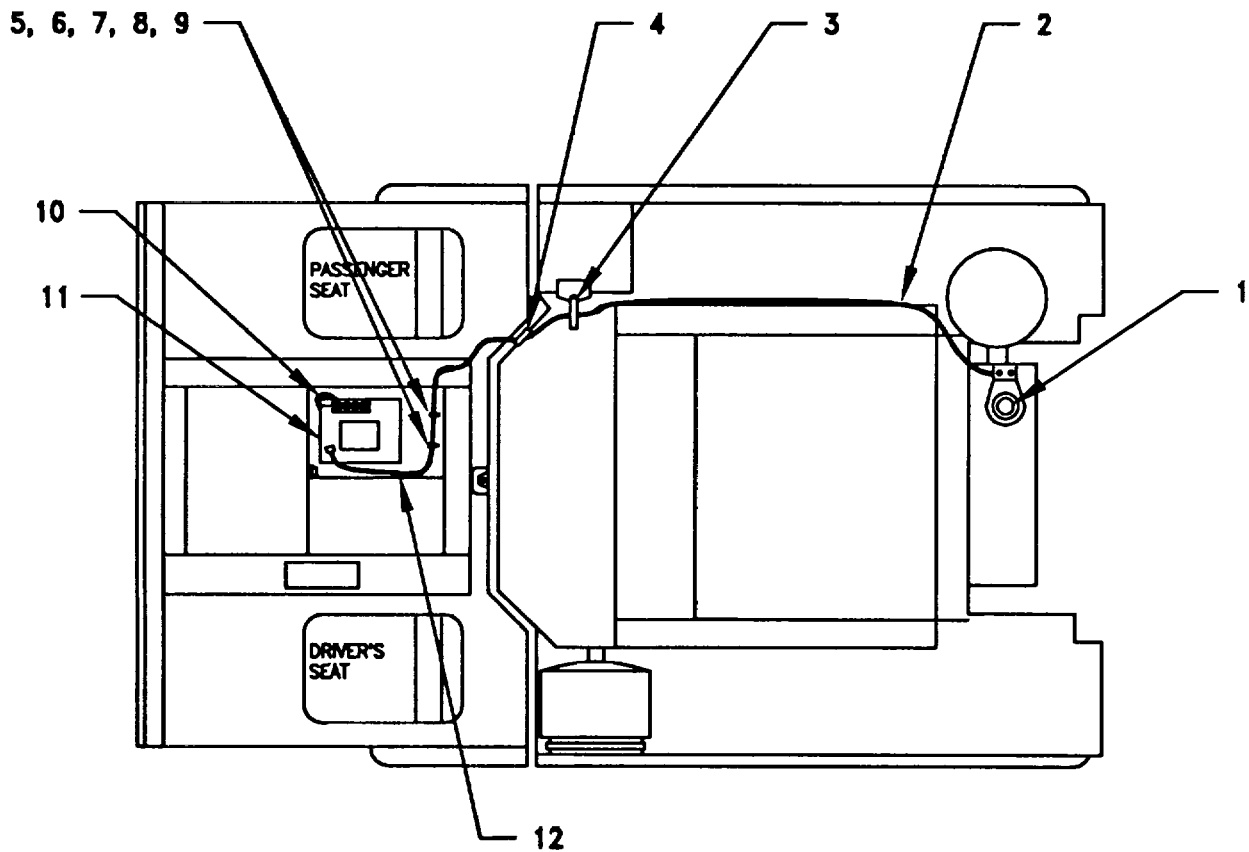
5.5 Installation of Cables. To accomplish the installation, leave loop clamps and tiedown straps loose enough to adjust cable slack and allow easy adjustment of equipment. When installation is complete, tighten and secure all clamps, clips and tiedown straps.

WARNING

Make sure vehicle power source is positioned OFF or disconnected before installing cables.

ITEM	ACTION	REMARKS
a. RF cable (2) connector P1.	Connect and secure to antenna base (1) connector J1. See Figure 5-6.	
b. Tiedown strap (3).	Tie wrap the RF cable to the hydraulic tank tie rod.	
c. Grommet (4).	Locate the plugged hole in the rear cab wall. Remove the plug. Feed the RF cable through the hole and insert grommet (4). Seal the cable and grommet with RTV sealant.	
d. Two loop clamps (5), two cap screws (6), two flat washers (7), two lock washers (8), and two nuts (9).	Drill two 9/32 in diameter holes in mounting plate (12). See Figure 5-6 for approximate location. Wrap loop clamps (5) around RF Cable (2) and install and secure to drilled holes. Dress the cable to the left side of the mounting base (11).	Tools: Electric drill, 9/32 in drill bit, 7/16 in socket and 7/16 in open/box wrench.
e. Mounting plate (12).	Secure with existing screws.	Tools: No. 2 Phillips screwdriver.
f. Power cable (10).	Connect and secure to mounting base (11), connector J1.	

5.5 Installation of Cables.Continued.



1. ANTENNA
2. RF CABLE
3. TIEDOWN STRAP
4. GROMMET
5. LOOP CLAMPS
6. CAP SCREW (1/4-20 X 3/4)
7. FLAT WASHER (1/4 IN)
8. LOCK WASHER (1/4 IN)
9. NUT, HEXHEAD (1/4-20)
10. POWER CABLE
11. MOUNTING BASE
12. MOUNTING PLATE

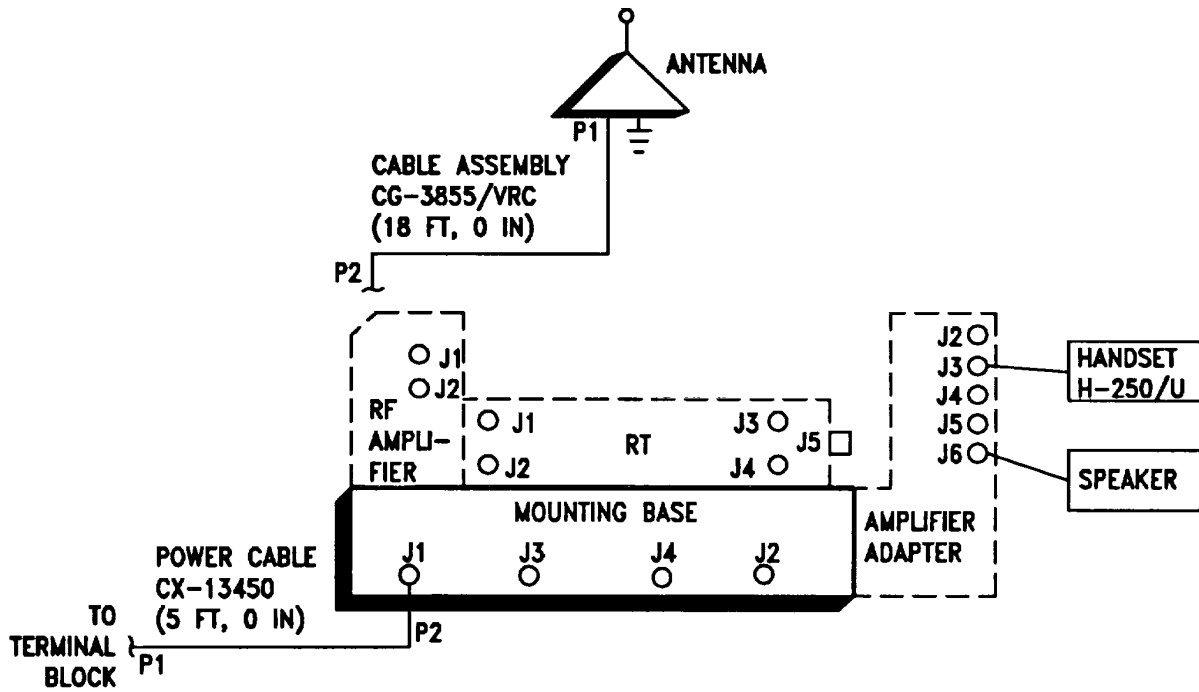
Figure 5-6. Installation of Cables

5.6 Installation of MK-2499NRC. For Radio Set ANNRC-87/88/90, install MK-2499NRC (TSEC/KY-57 security equipment) in the location shown in Figure 5-1(2) with four (4) each screws and mounting plate. Refer to section 5.8 for connection of cables.

5.7 Post-Installation and Checkout. After equipment is installed and cables are connected, perform the following steps.

ITEM	ACTION	REMARKS
a. Equipment.	Check for secure mounting. Check for loose parts, connectors, and mounting hardware.	
b. Cables.	Check for proper installation and connection of cables. See Figure 5-7 for cable connections. Unused cables should be stowed in appropriate place inside the vehicle.	
c. Loop clamps.	Check that all have been properly installed and tightened.	
d. Protective covers.	Insure that all installed cables are covered when not in use or connected.	
e. Radio issued with	Install and connect cables. See TM 11-vehicle. 5820-890-20-1 or TM 11-5820-890-20-4 for installation and operational (OP) checks and instructions.	
f. MK line replaceable units.	See TM 11-5820-890-20P for Repair Parts and Special Tools List (RPSTL) information.	

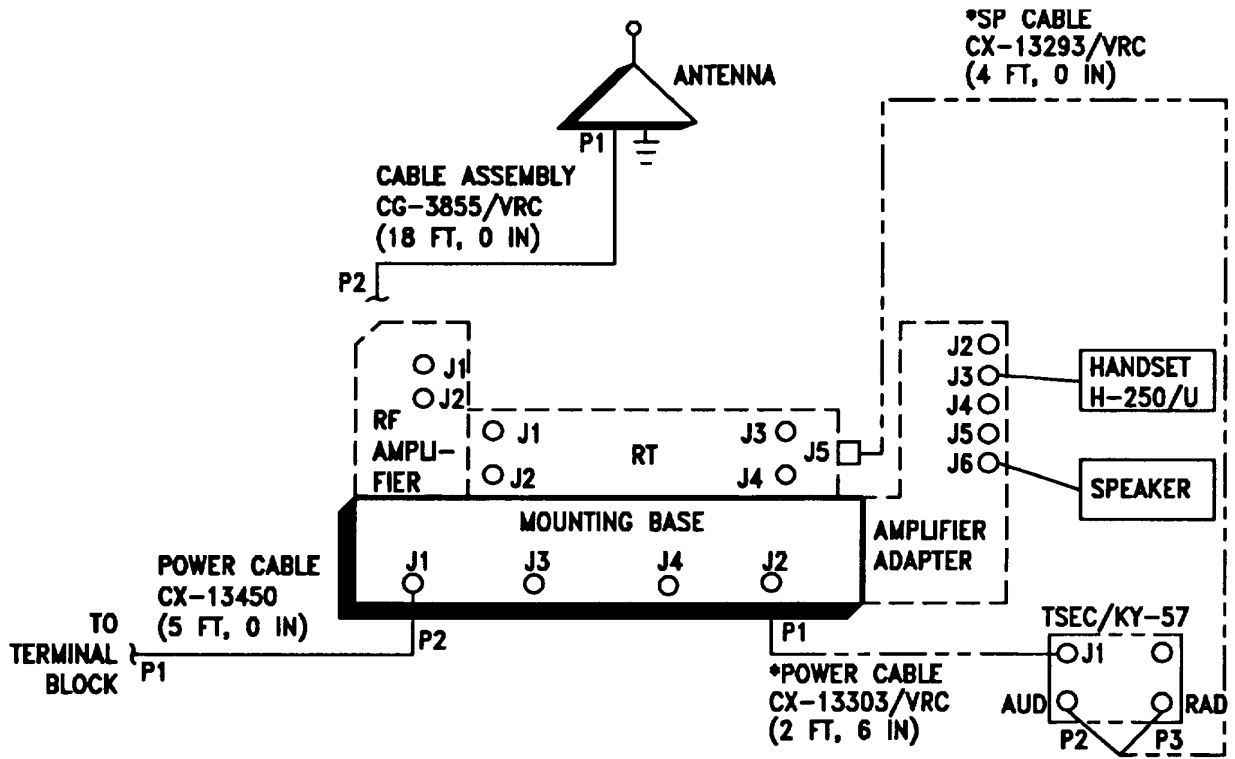
5.7 Post-Installation and Checkout. Continued.



CABLE ASSEMBLY	FROM			TO		
	CABLE CONN.	UNIT	UNIT CONN.	CABLE CONN.	UNIT	UNIT CONN.
CG-3855/VRC (18 FT, 0 IN)	P2	RF Amplifier	J1	P1	Antenna base	J1
CX-13450 (5 FT, 0 IN)	P2	Mounting Base	J1	P1	Vehicle Power Source	Terminal Block
Speaker Cable		Amplifier Adapter	J6		Speaker	
Handset Cable		Amplifier Adapter	J3		Handset	

Figure 5-7(1). Cable Diagram: For AN/VRC-87A/88A/90A

5.7 Post-Installation and Checkout. Continued



CABLE ASSEMBLY	FROM			TO		
	CABLE CONN.	UNIT	UNIT CONN.	CABLE CONN.	UNIT	UNIT CONN.
CG-3855/VRC (18 FT, 0 IN)	P2	RF Amplifier	J1	P1	Antenna Base	J1
CX-13450 (5 FT, 0 IN)	P2	Mounting Base	J1	P1	Vehicle Power Source	Terminal Block
Speaker Cable		Amplifier Adapter	J6		Speaker	
Handset Cable		Amplifier Adapter	J3		Handset	
*CX-13303/VRC (2 FT, 6 IN)	P1	Mounting Base	J2	P2	MT-6429/VRC	J1
*CX-13293/VRC (4 FT, 0 IN)	P1	RT	J5	P2 P3	TSEC/KY-57	AUD RAD

* Not supplied in this MK.

Figure 5-7(2). Cable Diagram:AN/VRC-87/88/90

**APPENDIX A
REFERENCES**

AMDF	Army Master Data File (Microfiche)
AR 710-2	Supply Policy Below the Wholesale Level as Contained in Unit Supply UPDATE
AR 725-50	Requisitioning, Receipt and Issuing System in UPDATE
DA Pam 25-30	Consolidated Index of Army Publications (Microfiche)
DA Pam 710-2-1	Using Unit Supply System Manual Procedures as Contained in Unit Supply UPDATE
SB 11-131-2	Vehicular Radio Sets and Authorized Installations (SINCGARS)
TM 11-5820-890-10-1	Operator's Manual (ICOM Radio Sets)
TM 11-5820-890-10-3	Operator's Manual (Non-ICOM Radio Sets)
TM 11-5820890-20-1	Unit Maintenance Manual (ICOM Radio Sets)
TM 11-5820-890-20-2	Unit Maintenance Manual (ICOM Radio Sets)
TM 11-5820-890-20-4	Unit Maintenance Manual (Non-ICOM Radio Sets)
TM 11-5820-890-20P	Repair Parts and Special Tools List

A-1/(A-2 blank)

By Order of the Secretary of the Army:

GORDON R. SULLIVAN
General, United States Army
Chief of Staff

Official: 
MILTON H. HAMILTON
Administrative Assistant to the
Secretary of the Army
06139

DISTRIBUTION:

To be distributed in accordance with DA Form 12-36-E, block 9651 requirements for TB 11-5820-890-20-84.

*U.S. GOVERNMENT PRINTING OFFICE:1994-510-106/00161

This page only for NON-SOFTWARE-related TM errors/improvements.

RECOMMENDED CHANGES TO EQUIPMENT TECHNICAL PUBLICATIONS



THEN...JOT DOWN THE DOPE ABOUT IT ON THIS FORM. CAREFULLY TEAR IT OUT. FOLD IT AND DROP IT IN THE MAIL.

SOMETHING WRONG WITH THIS PUBLICATION?

FROM: (PRINT YOUR UNIT'S COMPLETE ADDRESS)

DATE SENT

PUBLICATION NUMBER

PUBLICATION DATE

PUBLICATION TITLE

BE EXACT PIN-POINT WHERE IT IS

PAGE NO.	PARA-GRAPH	FIGURE NO.	TABLE NO.
----------	------------	------------	-----------

IN THIS SPACE TELL WHAT IS WRONG AND WHAT SHOULD BE DONE ABOUT IT:

TEAR ALONG PERFORATED LINE

PRINTED NAME GRADE OR TITLE AND TELEPHONE NUMBER

SIGN HERE

DA FORM 2028-2
1 JUL 79

PREVIOUS EDITIONS
ARE OBSOLETE

P.S.—IF YOUR OUTFIT WANTS TO KNOW ABOUT YOUR RECOMMENDATION MAKE A CARBON COPY OF THIS AND GIVE IT TO YOUR HEADQUARTERS

